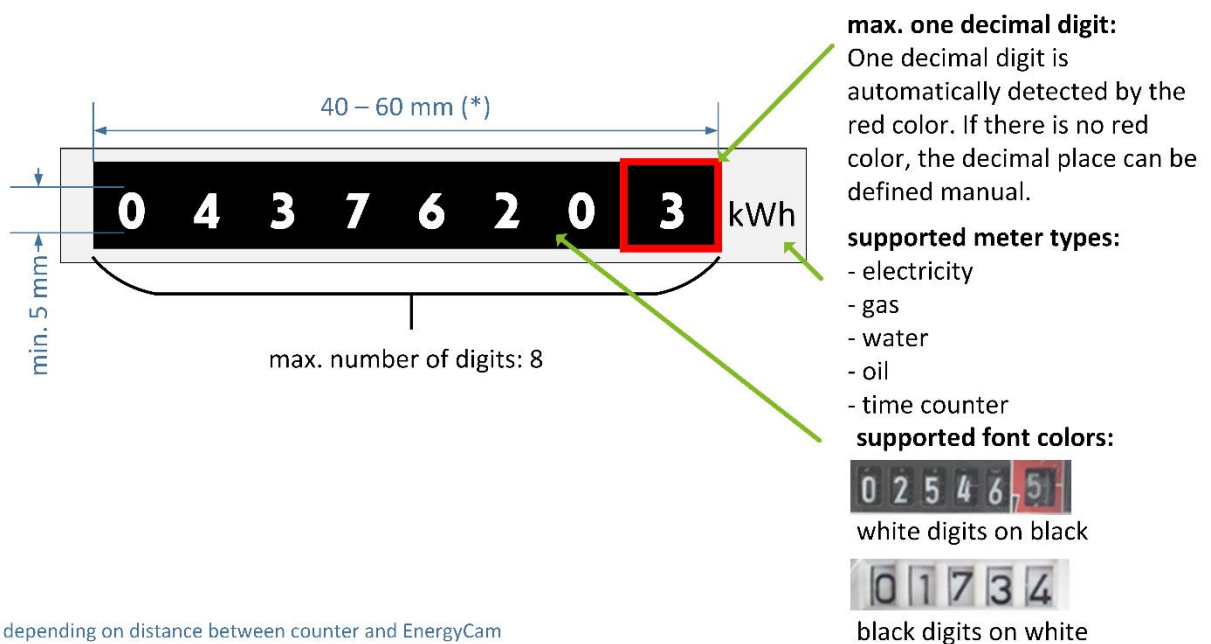




## FAST EnergyCam supported meters

### 1) EnergyCam in general



- ✓ EnergyCam supports mechanical electricity, gas, water, oil meters and counter
- ✓ forward and reverse meter counting is supported
- ✓ upside or upside-down mounting of EnergyCam is possible
- ✓ adapters to support a variety of meter types are available

To install EnergyCam on electricity, gas, water, oil meter or time counter, the meter window needs to be clear and large enough so that EnergyCam can be mounted right below or above the counter. Due to the tilted optical way, the counter cutout needs to be large enough to see full letters from the camera's position. Any prints on the meter window below or above the counter might disturb the camera.

Not sure if your meter is supported? Do not hesitate to contact our support team:  
<http://www.fastforward.ag/eng/support>

### 2) EnergyCam on electricity meters

EnergyCam can be mounted on electricity meters with:



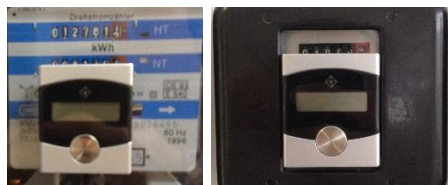
*small size window*

*standard size window*



*counter on top*

*counter at the bottom*



*colored front plate*

*black & white front plate*



*FAST 2-Tariff Meter  
Adapter L-Shape*



*two EnergyCam devices on  
2-Tariff Meter*

- ✓ small or standard front cover glass window sizes
- ✓ the counter at the top or at the bottom side of the front cover glass window
- ✓ colored or black & white counter front plates

EnergyCam can be mounted upside or upside down. Even multiple tariff meters are supported. The FAST 2-Tariff Meter Adapter L-Shape (Art.Nr. 2008) can be used to mount the upper device.

Note: There are two EnergyCam devices needed to read both counters of a multiple tariff meter.

Due to the design of individual meters it is possible that not all the details of the counter can be seen on the image captured by EnergyCam.

A continuously updated list of known unsupported meters can be found in the following document "[FAST EnergyCam supported meters – Electricity Meters](#)".

## 3) EnergyCam on gas meters



FAST Gas Meter Adapter



FAST Gas Meter Adapter mounted on EnergyCam

To install EnergyCam on a gas meter an adapter is needed to ensure the right distance between EnergyCam and the counter.

The FAST Gas Meter Adapter (Art.Nr. 2001) is fixed to the backside of EnergyCam before installation on the meter.

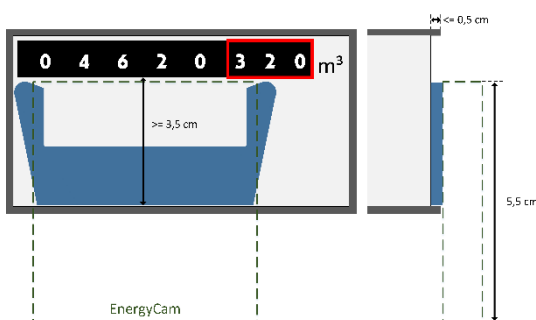


upside mounted EnergyCam



upside down mounted EnergyCam

Depending on the position of the counter, EnergyCam can be mounted upside or upside down.



FAST Gas Meter Adapter mounting area

The orientation depends on the space available below or above the meter front cover.

The FAST Gas Meter Adapter (Art.Nr. 2001) needs at least 3,5 cm to be mounted. If the EnergyCam device exceeds the meter front cover, its frame must not be higher than 0,5 cm to be able to mount EnergyCam.



Gas Meter Adapter Frame mounted on a gas meter



EnergyCam mounted with a Gas Meter Adapter Frame on a gas meter

If there is not enough space to mount the FAST Gas Meter Adapter (Art.Nr. 2001) on the meter window, the FAST Universal Gas Meter Adapter (Art.Nr. 2014) can be used to mount EnergyCam.

Due to the design of individual meters it is possible that not all the details of the counter can be seen on the image captured by EnergyCam.

A continuously updated list of known unsupported meters can be found in the following document "[FAST EnergyCam supported meters – Gas Meters](#)".

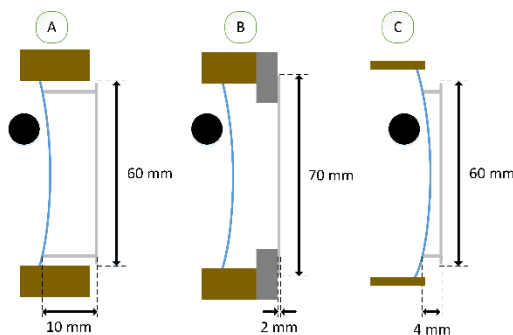
## 4) EnergyCam on water meters



FAST Water Meter Adapter

To install EnergyCam on a water meter and to ensure to have the right distance between EnergyCam and the counter, adapters are available.

The appropriate FAST Water Meter Adapter (Art.Nr. 2002 / Art.Nr. 2011 / Art.Nr. 2012) is fixed to the meter before installing EnergyCam on the adapter.



different Water Meter Adapter heights

The FAST Water Meter Adapter is available in three different heights according to the actual meter type (see examples below).

The distance from the front tip of the counter to the glass of EnergyCam needs to be about 8 mm.



EnergyCam on Water Meter Adapter Art.Nr. 2002

For water meters with brass frame (fig. A) the FAST Water Meter Adapter 60/100 mm (Art.Nr. 2002) will fit best.



water meter with plastic frame

For water meters with a flat plastic frame above the brass frame (fig.B) the FAST Water Meter Adapter (Art.Nr. 2012) (2mm) will fit best.



water meter without distinctive frame

For residential water meters without a frame (fig. C) the FAST Water Meter Adapter 60/4 mm (Art.Nr. 2011) will fit best.

### 5) EnergyCam on oil meters



FAST Gas Meter Adapter



EnergyCam with mounted FAST Gas Meter Adapter on a Braun HZ5 oil meter

EnergyCam can currently only read the oil meter Braun HZ5<sup>1</sup>. An adapter is required to mount the device. This ensures the right distance between EnergyCam and the counter.

The FAST Gas Meter Adapter (Art.Nr. 2001) is fixed to the backside of EnergyCam before the installation on the meter.

### 6) EnergyCam on time counters



Müller time counter



EnergyCam mounted on a Müller time counter

EnergyCam can currently only read the time counter from Müller. No adapter is required to mount EnergyCam on the meter.

<sup>1</sup> Due to the counter, a smart installation is not possible. EnergyCam must be configured with manual installation (for details see manual).