

FAST EnergyCam Data Logger (Art.Nr.1011)

Quick Start Guide

1 - How it works

EnergyCam Data Logger reads mechanical meters such as electricity, gas and water meters and logs the readings into a CSV file, which can later be transferred to a PC.

This guide gives you all the information you need to set up and run the device.

2 - What's in the box

- 1) EnergyCam Data Logger
- 2) 3M VHB surface cleaning kit
- 3) 3M adhesive pads
- 4) Quick Start Guide (this document)



Various battery types (Art. Nr. 1072, 1073) available!

3 - Installation

On the back of this page you'll find instructions on how to configure and install your EnergyCam Data Logger.

For instructions on how to transfer the logged data to a PC, see EnergyCam manual, chapter 3f.

4 - Safety Information



WARNING: If the battery is replaced improperly, there is danger of explosion.

As internal battery, a CR 2450 lithium 3V button cell must be used.



Batteries, electrical and electronic devices may not be disposed of with household waste.

These devices must be returned to designated collection facilities appointed by the government or by the local authorities.



The CE mark is a free trade mark. It does not guarantee any product features.

5 - Technical support

If you have any problems or questions, please contact us directly:

You can reach us from Monday to Friday between 0900 and 1700 CET

Tel: +49 (0)89-540-40-100

www.fastforward.ag/eng/support

FAST FORWARD AG Ruedesheimer Strasse 11, D-80686 Munich

1. Preparation

A) Install ECWin software

Download the latest build (ECWin Build #) from our website: <http://www.fastforward.ag/eng/download>

B) Documentation review

Review the installed documentation which explains how to install and use your EnergyCam. The manual can be opened by pressing the help button in ECWin.

2. Configuration

This step is only required if you want to change the EnergyCam configuration. The device is preconfigured with the following defaults:

M-Bus (Type: Electricity)

OCR Configuration (Read Decimal: enabled, Reading Timer: 15 Minutes, Font: White on Black)

OCR Installation (Smart Installation: enabled)

Data Logger (Data Logger: enabled)

Serial (Modbus, 115200 Baud, 8E1, Slave address: 1)

Advanced (Auto power down after reading: enabled)

A) Unpack and connect EnergyCam to your PC

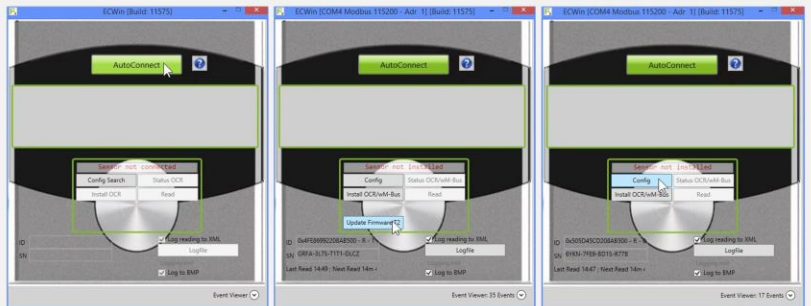
using the FAST USB Communication Interface (Art. Nr. 1063) and a Micro-USB data cable (not included). Maybe wait for the automatic installation of the device driver software.



A)

B) Start ECWin application and press AutoConnect button

The Software automatically searches for connected EnergyCam devices. If the ECWin application is not able to connect – please check: Device Manager → Ports (COM & LPT) → USB Serial Port (COM ?) must be present. If not, see chapter 3.a) of the manual and follow the driver install instructions.



B)

C)

D)

C) Update the firmware of the device if necessary

If the firmware of EnergyCam is not up to date, update it now by pressing the designated button.

D) Open the device configuration dialog

by pressing the *Config* button.

E) Configure your EnergyCam

Adjust the settings to fit your requirements. Confirm changes with *OK!* (Further information in chapter 3.d) of the manual)

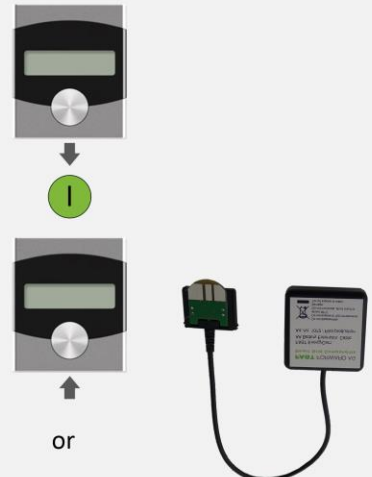
F) Set the time on the EnergyCam device

Press the button *Disconnect*. This sets the system time on the EnergyCam device to the time of the PC. Now immediately continue with steps G) and H).

G) Disconnect EnergyCam from your PC

Unplug the FAST USB Communication Interface.

G)



H)

H) Insert battery

Insert the CR2450 battery (Art. Nr. 1073) into the provided tray. Plug the battery tray in your EnergyCam or plug in the FAST AA Battery Extension (Art. Nr. 1072). Note: Data logging will start after you successfully install EnergyCam on a meter.

3. Install EnergyCam on meter

A) Install EnergyCam on a meter

Press the button until "– 3 –" is shown on LCD to trigger installation. Position the device on the meter. The LED arrows will help you to locate the exact position for the meter readout. Note that an upside down installation may be necessary. For further information, read chapter 2.d) of the manual.



move up

move to the right

ok